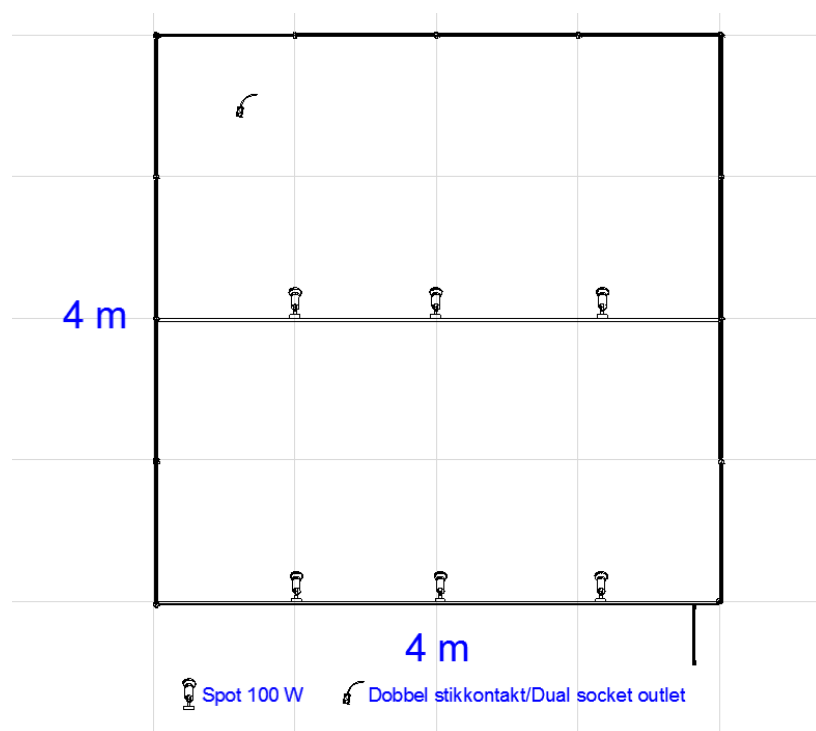


Standard stand 16 m²/sq.m



Standen inneholder:

Oppsatte FOGAvegger (hvite)
16 m² nålefiltfliser
1 stk. dobbel stikkontakt
Tilkobling og forbruk av
elektrisk kraft 1,5 kW 1 fas
6 stk. spotlights 100 W
Standard standskilt

The standard stand is equipped as follows:

Ready-mounted FOGA walls (white)
16 sq.m carpet tiles
1 dual socket outlet
Electricity supply 1,5 kW 1 phase 230 V
6 spotlights 100 W
Company name sign